

Fra flersengsstuer til ensengsstuer

– har det haft klinisk betydning for patienterne og har det gjort nogen forskel for sygeplejerskerne?

Og kan man bruge stuerne til udvikling af brugen af teknologi?

Merete Gregersen

klinisk specialist og lektor

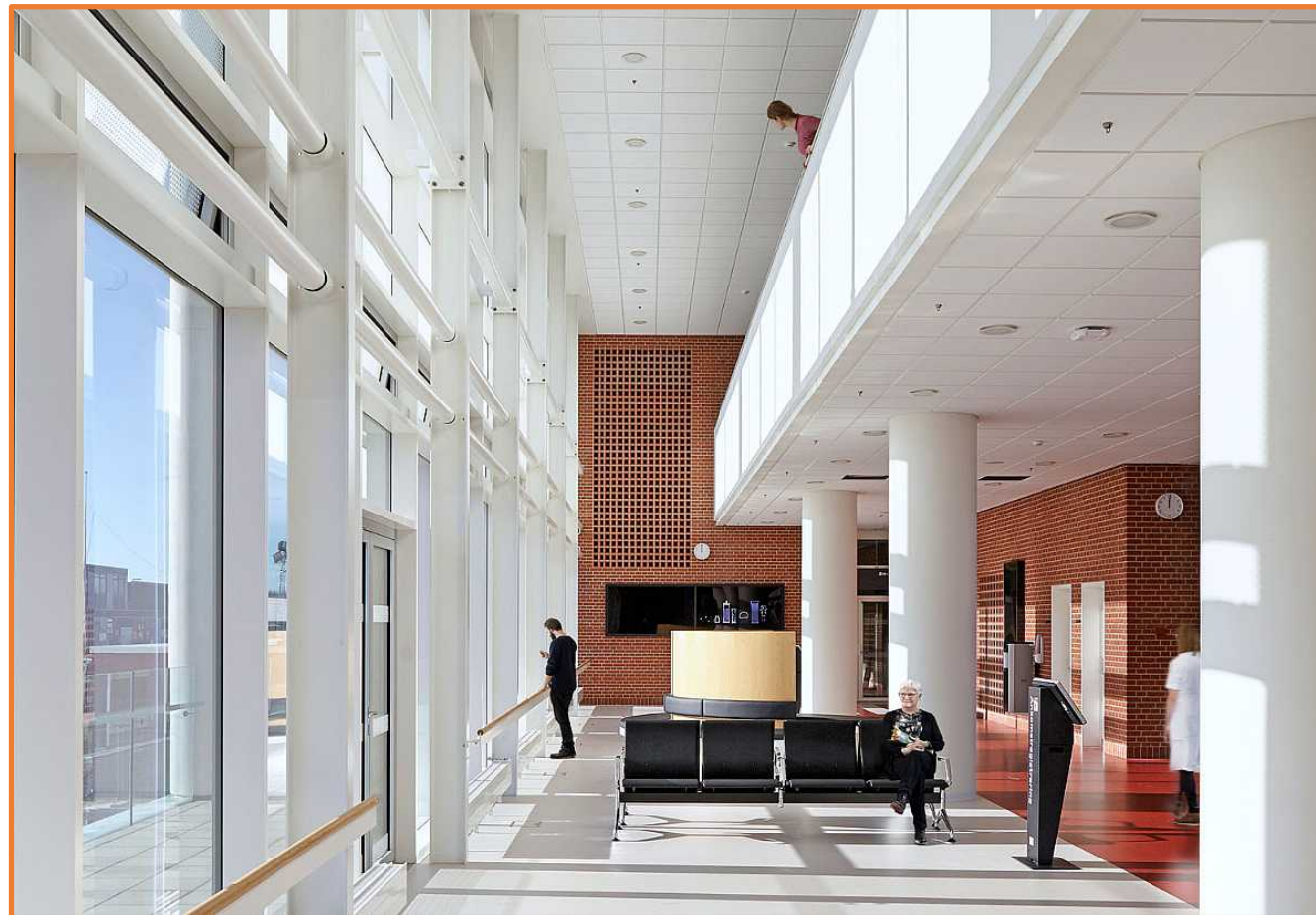
Ældresygdomme, AUH

Hanne Konradsen

Professor i sygepleje

Herlev og Gentofte Hospital

Aarhus Universitetshospital



AUH





Ensenkstuer





Ensenstuer





Ældresygdomme



Flersengsstuer



©Jonna Fuglsang Kelsen

Effekt af ensengsstuer

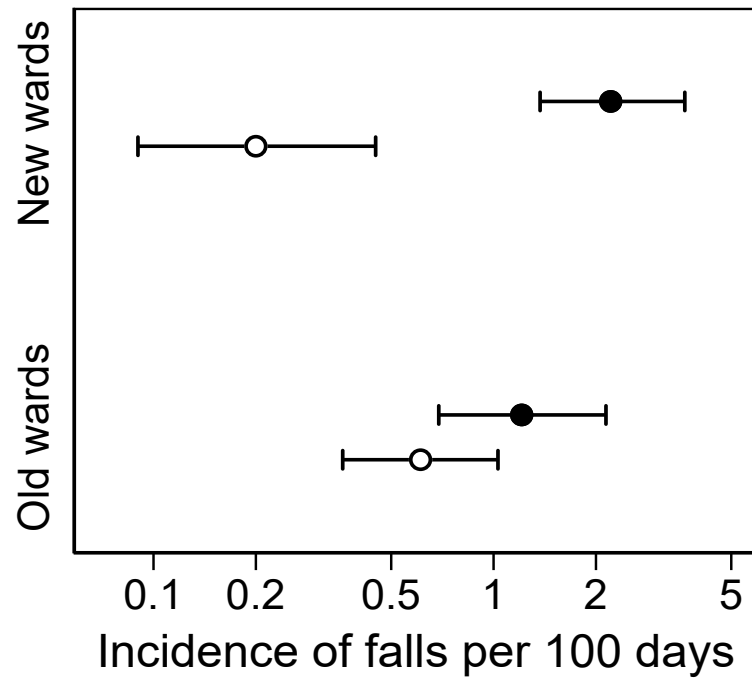
Delirium

Fald

Søvnmangel

Hospitalserhvervet infektion

Fald



(N=1.014)

Delirium

- Yes
- No



Aging Clinical and Experimental Research
<https://doi.org/10.1007/s40520-019-01335-y>

ORIGINAL ARTICLE



Analgesic and psychoactive medications and the risk of falls in relation to delirium in single-bed rooms compared to multiple-bed rooms in geriatric inpatients

Sif Blandfort¹ · Merete Gregersen¹ · Kirsten Rahbek¹ · Svend Juul² · Else Marie Damsgaard¹

Received: 24 May 2019 / Accepted: 21 August 2019
© Springer Nature Switzerland AG 2019

Søvnmangel

(N=226)

Weng HS, Sorensen MB, Gregersen M.

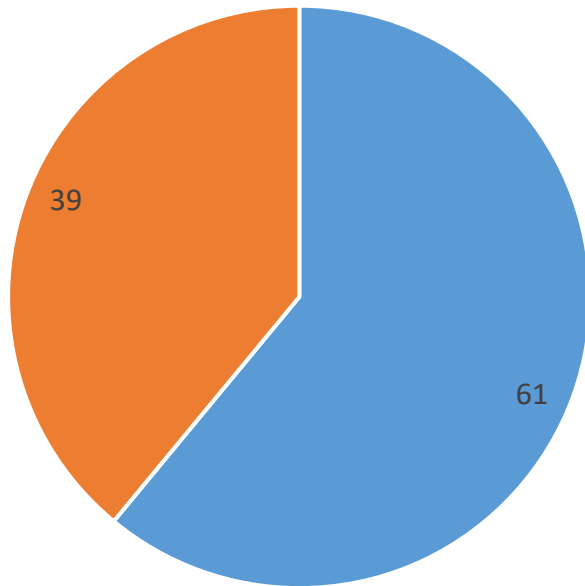
Sleeping quality and sleep disturbing factors assessed by geriatric patients in single-bed or multiple-bed hospital.

Abstract from 13th International Congress of the European Union Geriatric Medicine Society, Nice, France.



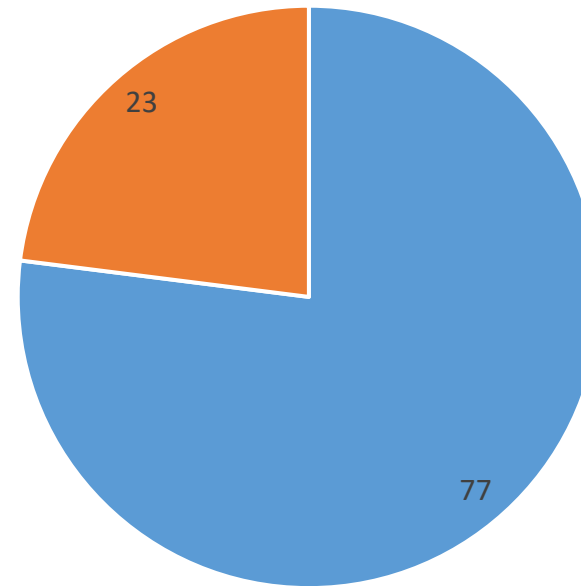
”Har du sovet godt i nat?”

Flersengsstue (n=115)



■ Ja ■ Nej

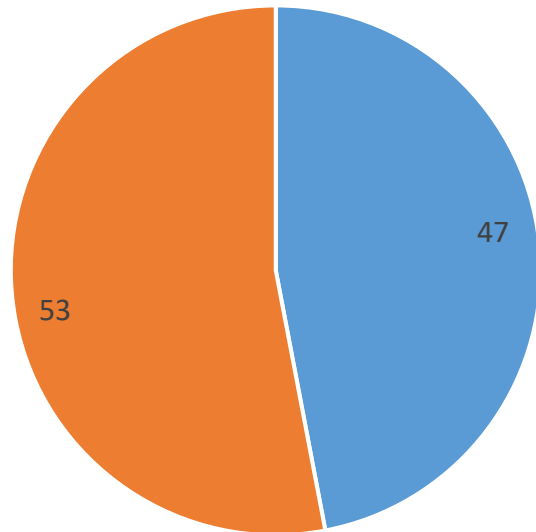
Ensengsstue (n=111)



■ Ja ■ Nej

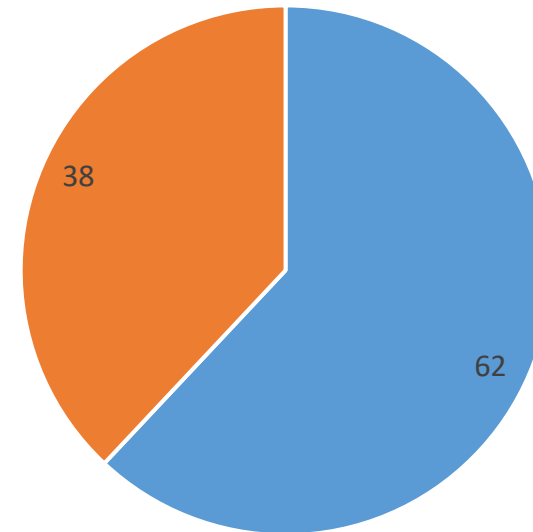
”Har noget forstyrret din søvn?”

Flersengsstue (n=115)



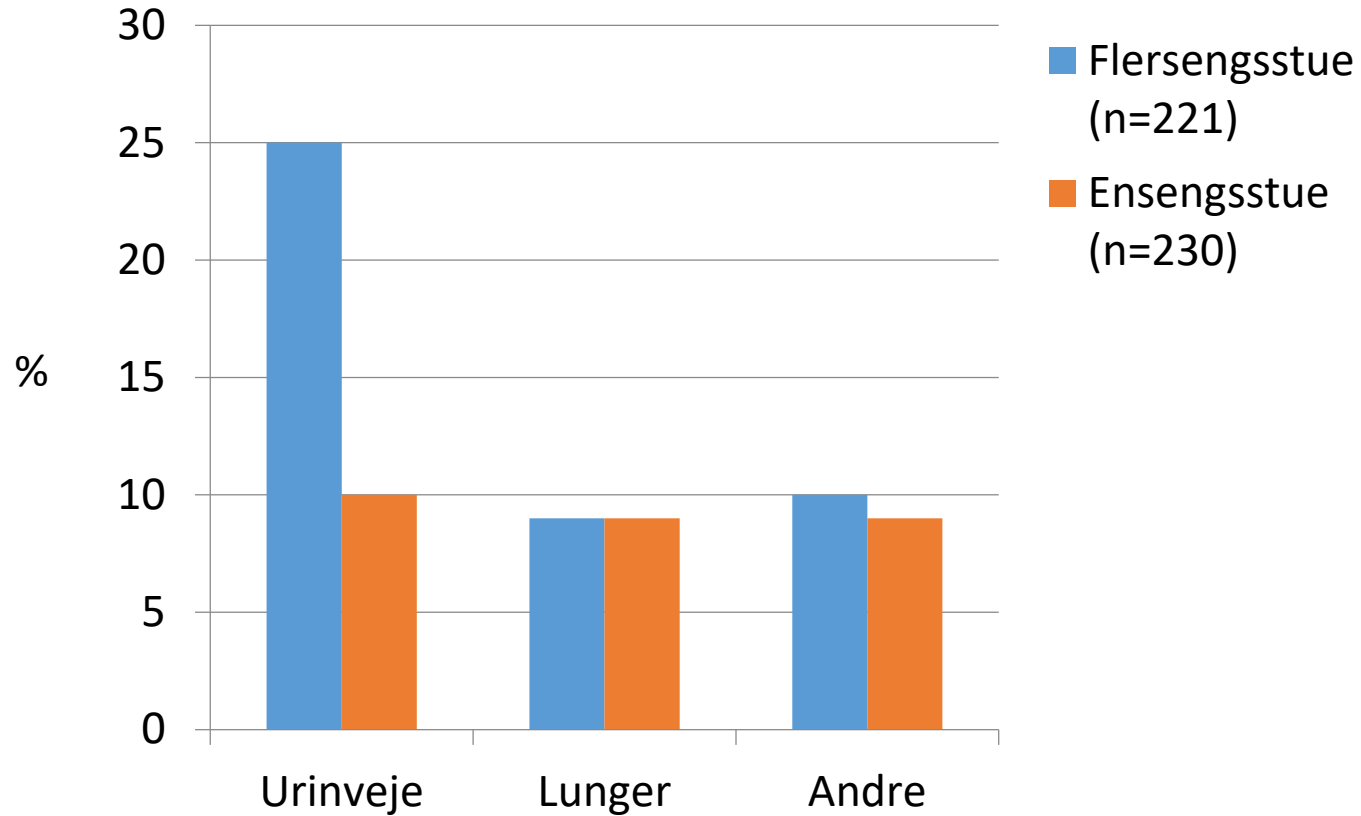
■ Nej ■ Ja

Ensengsstue (n=111)



■ Nej ■ Ja

Hospitalserhvervet infektion



OR: 0.56 (95% CI: 0.33-0.93) p=0.026

Original Research

Use of single-bed rooms may decrease the incidence of hospital-acquired infections in geriatric patients: A retrospective cohort study in Central Denmark region

Merete Gregersen¹, Anders Mellekjær², Catherine H Foss³ and Sif Blandfort⁴

Journal of Health Services Research & Policy
0(0) 1-7
© The Author(s) 2021
Article reuse guidelines:
sagepub.com/journals-permissions
DOI: 10.1177/1355819621994866
journals.sagepub.com/home/hsr
SAGE

Take home message

- Enestuer halverer alvorlig forvirringstilstand hos ældre patienter
- Enestuer forebygger fald hos ældre delirøse patienter
- Enestuer giver ældre patienter bedre søvnkvalitet
- Enestuer reducerer risiko for urinvejsinfektion hos ældre patienter

Teknologi på ensengsstuer



Herlev og Gentofte hospital

Sygeplejersker og social- og sundhedsassistenteres vilkår og oplevelser af forskellen mellem ensengsstuer og flersengsstuer

Scoping review fra 2022 summerede at der er forskel i forhold til arbejdsvilkår, klinisk praksis og patient sikkerhed. Ingen dokumenterede prospektive danske studier (Søndergaard 2022)



Målinger af forskellen på hvor mange skridt der tages i en vagt



Variable	Multi-beds room			Single-bed room			Test	P value
	Nurse N=15	Nurse assist. N=8	Total sample N=23	Nurse N=13	Nurse assist. N=7	Total sample N=20		
Age, year, M (SD)	31.2 (8.7)	47.9 (12.7)	37 (13)	30.7 (5.7)	52.3 (12.4)	38.2 (13.4)	-0.311 ^a	0.757 ^a
Work Experience, years, M (SD)	5.1 (4.1)	18.2 (15.4)	9.7 (11.3)	5 (5)	19.3 (16)	10 (12.1)	-0.074 ^a	0.941 ^a
Shift, N (%)							1.326 ^b	0.515 ^b
Morning			570 (67.4)			386 (66.6)		
Evening			192 (22.7)			144 (24.8)		
Night			84 (9.9)			50 (8.6)		
Total			846			580		
Steps, M (SD)	7732.1 (1945.8)	10434.6 (3524)	8342.7 (2574)	8717.7 (4614)	8168	8253.8 (2709)	0.627 ^a	0.531 ^a

Signifikant korrelation mellem antal skridt og belægningsprocent på flersengsstuer, men ikke på ensengsstuer

Kvalitative interviews med sygeplejersker og social- og sundhedsassistenter der har erfaring med at arbejde på begge afdelingstyper



Samarbejde



Relation til patienten

Søvn under indlæggelse

Tabel 1: Demografiske data (N=100)

Variables:	
Gender (men) (%)	50%
Age (mean (SD))	65.0 (13.1)
Married	57%
Not in a relationship	35%
ASA classification	1 point: 17.2% 2 points: 57.6% 3 points: 24.2% 4 points: 1%
Stomi (yes)	Illeostomy=23.8% (n=5) Colostomy =76.2% (n=16)
Blood glucose (mean (SD))	7.6 (2.0)
C-reaktivt protein	99.6 (88.5)
Intravenous access (yes)	96.9%
Parenteral nutrition (yes)	1%
Pressure-relieving mattress (yes)	2%
KAD, catheter to demure (yes)	42.3%
Ventricular probe (yes)	5.1%
Comorbidities (Carlson Comorbidities) (mean (SD))	3.5 (2.3)
Diagnose (%):	
Colon cancer/suspected colon cancer	41%
Acute abdomen (illuis/appendicitis/diverticulitis)	34%
Inflammatory colon disease (crohns/colitis)	3%
Other diagnoses	22%

Sammenhængen mellem Quality of recover – 15D, totalscore fra actigraph, søvnkvalitet og moderatesmerter
Justeret for alder og køn.

Variables (N=52)	Ikke-justeret				Justeret ¹			
	β	95% CI for β		p-værdi	β	95% CI for β		p-værdi
		Lav	Høj			Low	High	
Quality of recover	1	Ref.	Ref.	Ref.	1	Ref.	Ref.	Ref.
Søvnkvalitet	5.0	2.7	7.3	0.000*	5.2	2.9	7.6	0.000
Moderate smerter	1.3	0.15	3.4	0.027*	1.2	0.09	2.3	0.035*
Totalscore af søvndata (actigraph)	2.9	-0.15	6.0	0.062	3.2	-0.02	6.4	0.052

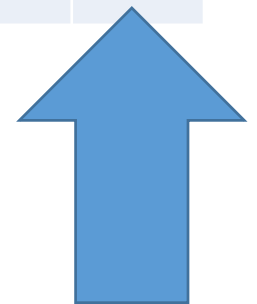
Søvn under indlæggelse

Tabel 1: Demografiske data (N=100)

Variables:	
Gender (men) (%)	50%
Age (mean (SD))	65.0 (13.1)
Married	57%
Not in a relationship	35%
ASA classification	1 point: 17.2% 2 points: 57.6% 3 points: 24.2% 4 points: 1%
Stomi (yes)	Illeostomy=23.8% (n=5) Colostomy =76.2% (n=16)
Blood glucose (mean (SD))	7.6 (2.0)
C-reaktivt protein	99.6 (88.5)
Intravenous access (yes)	96.9%
Parenteral nutrition (yes)	1%
Pressure-relieving mattress (yes)	2%
KAD, catheter to demure (yes)	42.3%
Ventricular probe (yes)	5.1%
Comorbidities (Carlson Comorbidities) (mean (SD))	3.5 (2.3)
Diagnose (%):	
Colon cancer/suspected colon cancer	41%
Acute abdomen (illuis/appendicitis/diverticulitis)	34%
Inflammatory colon disease (crohns/colitis)	3%
Other diagnoses	22%

Sammenhængen mellem Quality of recover – 15D, totalscore fra actigraph, søvnkvalitet og moderatesmerter
Justeret for alder og køn.

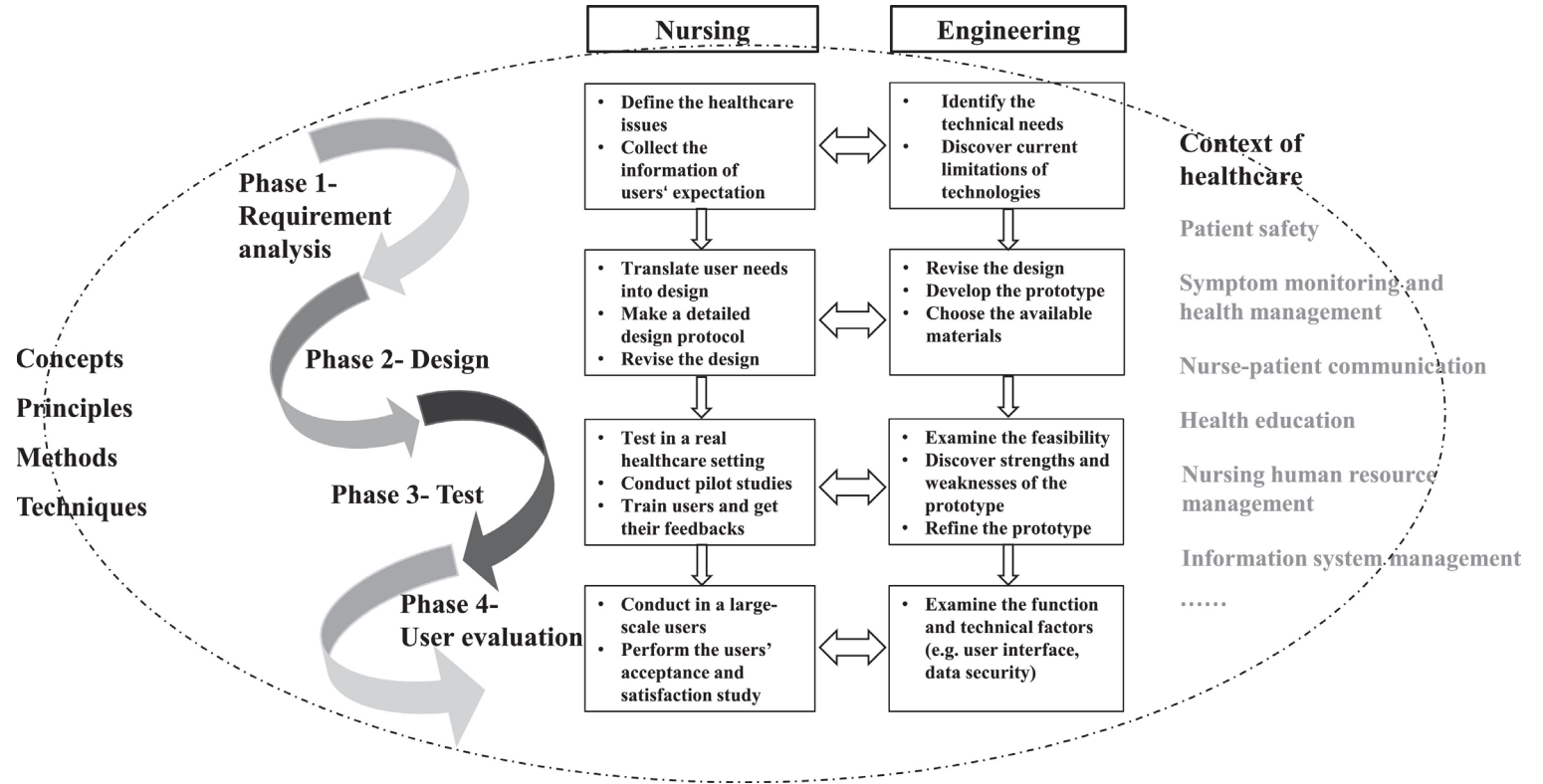
Variables (N=52)	Ikke-justeret				Justeret ¹			
	β	95% CI for β		p-værdi	β	95% CI for β		p-værdi
		Lav	Høj			Low	High	
Quality of recover	1	Ref.	Ref.	Ref.	1	Ref.	Ref.	Ref.
Søvnkvalitet	5.0	2.7	7.3	0.000*	5.2	2.9	7.6	0.000
Moderate smerter	1.3	0.15	3.4	0.027*	1.2	0.09	2.3	0.035*
Totalscore af søvndata (actigraph)	2.9	-0.15	6.0	0.062	3.2	-0.02	6.4	0.052





Innovation og
optimal brug af
nye fysiske
rammer

Interdisciplinary collaboration between nursing and engineering in health care: A scoping review
Zhou et al 2021



Our results reveal that nurses mainly play the role of tester and evaluator in interdisciplinary relationships. In the future, nurses should be more involved in the early stage of solving healthcare problems, particularly in the requirement analysis and design phases.



Tidlig mobilisering efter operation



Næste skridt







1.01 Toilet product description - UI



Væskebalance